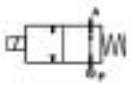


**2/2 WAY DIRECT ACTING SOLENOID VALVE, G 1/8"**



**normally open**

**TYPE: RB214**

**TECHNICAL SPECIFICATIONS**

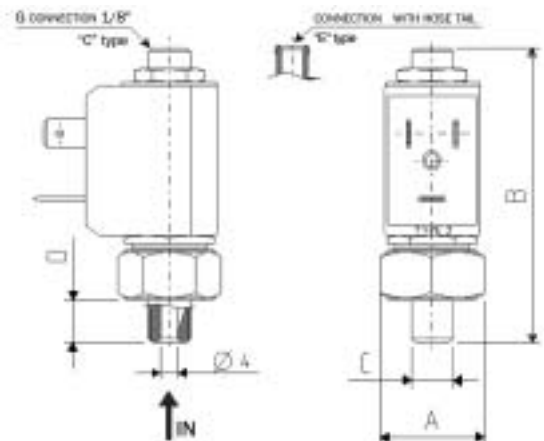
Media:	water, oil, air
Media temperature:	-10°C ÷ +130°C
Ambient temperature:	-10°C ÷ +50°C
Body material:	brass (CW617N EN 12165)
Operator material:	stainless steel
Main seal material:	foodgrade FKM A80
Coil power:	AC 10VA (holding) AC 16VA (inrush) DC 7W
Protection class:	IP 65 (with connector)

**OPTIONS**

EPDM seal for air and hot water MAX 120°C (Ex. code RB214CED)
Armature tube with hose tail Ø 6 mm (Ex. code RB214EVD)
Electroless nickel plating treatment (Ex. code RB214CVDK)



SELECTION TABLE	VALVE		G connection	Nominal Diameter	Flow rate kvs	OPD		COILS	
	Codice	[ISO 228]	[mm]	[l/min]	min	max		Codice	[Volts/Hz]
					[bar]	CA [bar]	CC [bar]		
	RB214CVD	1/8"	1.7	1.2	0	14	14	2250	24V CC
								2200	24V 50/60Hz
								2400	110V 50Hz - 120V 60Hz
								2600	200V 50Hz - 220V 60Hz
								2700	230V 50Hz - 240V 60Hz



DIMENSIONS & WEIGHTS	G connection	A	B	C	D	weight
	[ISO 228]	[mm]	[mm]	[mm]	[mm]	[Kg]
	1/8"	21	65.7	1/8"	9.5	-